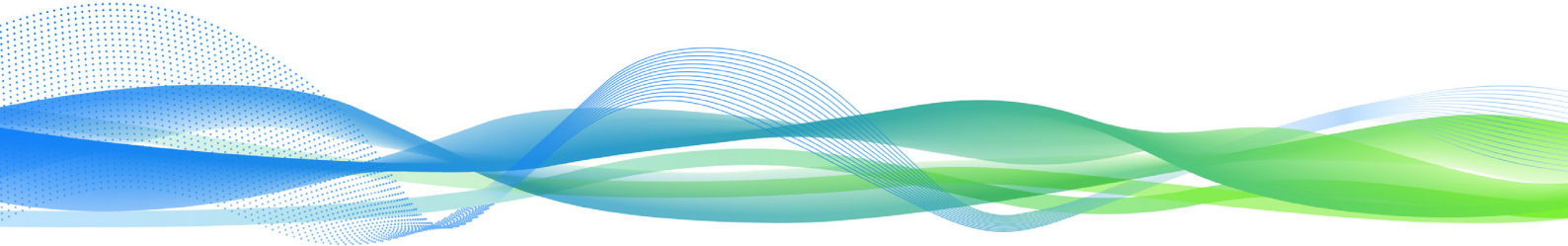


navify Tumor Board



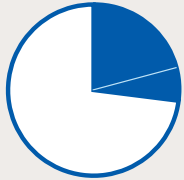
Three reasons why Ellis Fischel Cancer Center uses **navify** Tumor Board

navify Tumor Board saves time, reduces costs and standardizes care coordination.¹⁻³



30% Time Savings

Average reduction in overall preparation time access Breast, Gastrointestinal and Ear, Nose and Throat tumor boards¹



20 - 27%

Reduction in Case Discussion Time
Breast and GI

Reduced cost
45 - 52%
Reduction in Cost^{3*}
Breast and GI

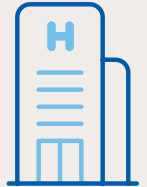


Standardize care coordination

Significant Variance Reduction

In case preparation and case discussion time

Reduction in Case Postponement Rate



Ellis Fischel Cancer Center

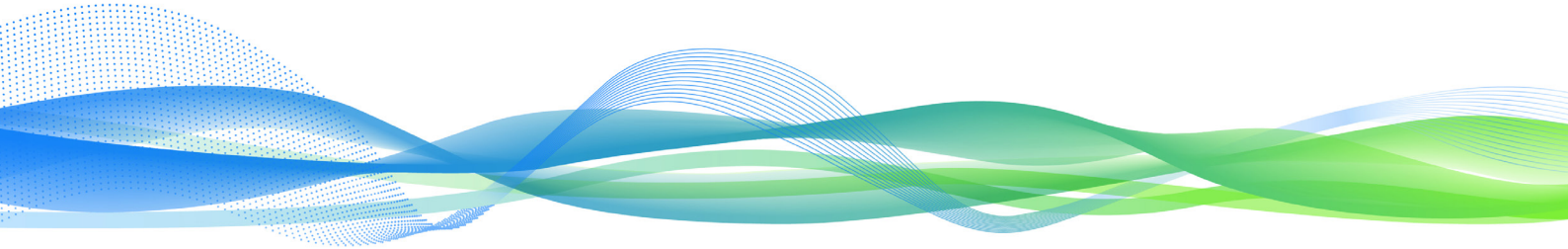
Ellis Fischel Cancer Center, a part of University of Missouri Health Care, is on a mission to not only treat cancer, but to defeat it. The most advanced technology and leading-edge research offers the safest, most effective and personalized treatment options.

- Academic health system
- Provides screening, diagnosis and treatment, all under one roof
- 10 sub-specialty tumor boards
- Total navify Tumor Board patient cases: 5586; 638 tumor boards
- 2020 case load: 2250 patient cases, 289 tumor boards
- 40 clinical trials currently open, and another 17 in development

Like many other cancer centers, Ellis Fischel found it challenging to quickly and easily bring together a holistic view of the patient with patient history, radiology and pathology images, and reports to make an informed decision for every patient. They found manual legacy approaches to preparing and conducting tumor boards to be time-consuming and inefficient. They needed a solution that would help improve operational effectiveness and support standardization across the institution.

“We had to overcome the challenge of incorporating clinical records from multiple separate sources into an easy and usable format for clinicians. navify provides that platform and was developed specifically for that intent.”

Richard Hammer, MD
Professor and Vice Chair of Clinical Affairs, Department of Pathology and Anatomical Sciences



Tumor Board Process Challenges



Disparate IT systems storing patient data made it **difficult to collect and organize data quickly and cost effectively.**



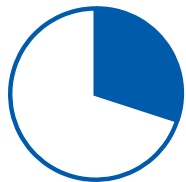
Without a standardized process to ensure no data gaps, **patient case discussions could potentially be postponed.**



Case discussions varied in depth based on the range of data available within the preparation time allocated.

From a common challenge to a clear solution

As an organization committed to highly personalized care, Ellis Fischel sought a better way to aggregate, organize, and visualize data from multidisciplinary stakeholders. By adopting **navify** Tumor Board, Ellis Fischel was able to achieve the following results:

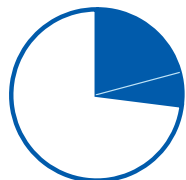


Time savings***

30%

Average Reduction in Overall Preparation Time

across Breast, GI and ENT tumor boards¹



20 - 27%

Time Savings in Case Discussion Time

for Breast and GI tumor boards^{3*}

What could this mean for you?

- Frees up precious time for healthcare providers to focus on patient care instead of administrative tasks
- Reductions in case discussion time could mean more patient cases could be discussed in each meeting
- Reductions in case discussion time could free up more time for more complex patient case discussions



Cost reduction

The efficiency gains and time savings translated into a

40 - 50%

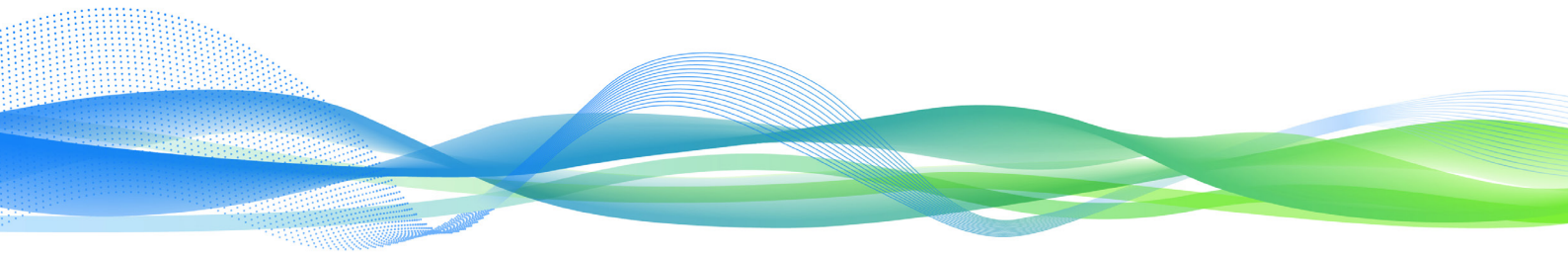
Reduction in Labor Costs

associated with case preparation and case discussion time^{3*}

Implementing **navify** Tumor Board helped Ellis Fischel achieve

~ \$299,000

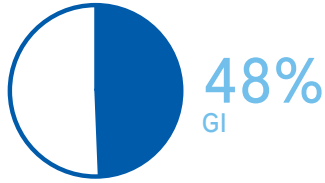
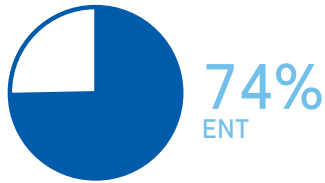
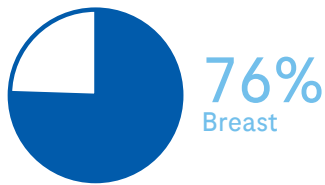
In Annual Cost Savings^{3*}



Care coordination standardization

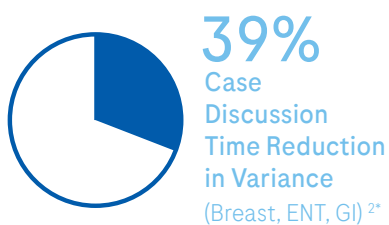
In addition to time and cost savings, the Ellis Fischel multidisciplinary team also observed significant reductions of variance in:

Case Preparation Time



Reduction in Variance

Breast, ENT and GI tumor boards¹

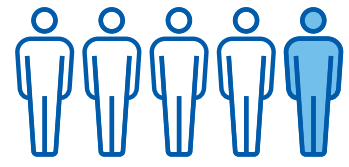


What could this mean for you?

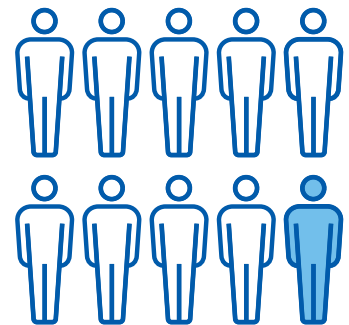
- Reduced variance and increased process standardization ensures uniformity of practice and consistency in the quality of patient case discussions
- Increased process standardization can also facilitate resource planning and help planning the number of case discussions per meeting
- Postponement of discussion can result in an unnecessary delay, which can be distressing for patients and potentially affect their wait to start treatment

Further benefit was evident in the case postponement rate. Data from the prospective study published in the Health and Technology journal showed that implementing **navify** Tumor Board:

Reduced ENT Tumor Board Postponement Rate from



1 in 5 Cases



1 in 10 Cases^{3**}

These results show that by implementing **navify** Tumor Board, Ellis Fischel standardized the multidisciplinary meeting workflow across various tumor board types. These improvements were continuous and sustained over time.*

Ellis Fischel realized these continuous and sustainable benefits with **navify** Tumor Board.

Learn what **navify** Tumor Board can do for you and your patients.

¹ Hammer RD, Fowler D, Sheets L, Siadimas A, Guo C, Prime, MS. Prime MA Digital Tumor Boards have a Significant Impact on Case Preparation Time JCO Clinical Cancer Informatics 2020 :4, 757-768.

² Hammer, RD, Fowler D, Sheets L, Siadimas A, Guo C, Prime M. A digital tumor board solution impacts case discussion time and postponement of cases in tumor boards. Health and Technology 2021-02-27 DOI 10.1007/s12553-021-00533-x.

³ Cost effectiveness of a Digital tumor board software in an academic institution. Manuscript in preparation.

*The results are specific to Ellis Fischel based on multiple Ellis Fischel tumor board sites. The data is available upon request. This is not a guarantee of results.