



## Lab Operations



### Simplify your workflow. Elevate your impact.

navify® Lab Operations is a powerful, integrated software solution designed to manage all laboratory activities. While many labs rely on siloed solutions for various tasks, navify® Lab Operations provides a single platform for all your needs.

The built-in QC Module automates Quality Control, reducing manual tasks and putting you in full control of the process. Manual workflows contribute to higher turnaround times (TATs), rates of error and costs. The navify® Lab Operations QC Module simplifies your workflow to reduce work hours, TATs, and costs, so you can meet the critical need to deliver accurate results for patients more quickly.

At Huntsville Hospital in Alabama, USA, navify® Lab Operations reduced manual QC steps and decisions by 62.5%, total clicks by 99%, and routine average TATs by 16.3 minutes. In addition, implementation of navify® Lab Operations resulted in projected cost savings of \$46,537 per year.





## Quality Control is vital to the functioning of the lab and the accuracy of patient results

Despite this, many labs rely on a tedious and overly complicated QC process with many manual steps, decisions, and pain points.

### Manual workflows increase TATs and costs

Time-consuming workflows result in high FTE costs attributed to QC, and longer TATs, as lab resources are consumed by the QC process – most critically, this impacts on patient results and clinical decisions.

Manual tasks are prone to error. With many manual steps, staff spend more time dealing with issues such as transcription errors. This consumes yet more resources, compounding costs for the lab, and delays for patients.

### A flexible, scalable set of digital tools

navify® Lab Operations is a browser-based solution that intelligently automates the three main areas of lab operations – pre-analytics, analytics and post analytics – and extends beyond the lab to manage ordering, sample collection, validation, reporting, and more.

### Do everything in one place, without paper

An advanced workflow engine controls sample processing to maximize efficiency. Automatic validation enables efficient result handling – giving you only the information you need (abnormal and critical results), so you can focus on what matters.

With Roche’s patient-centric approach to innovation at the heart of navify® Lab Operations, every feature is designed to elevate your impact on patient care.

### Automated Quality Control

The QC Module gives you full control over an automated Quality Control process.



Simplify daily review with auto-verification



Configure QC rules



Easily identify QC issues & related patient results



Compare results across analyzers, sites, & time

## Huntsville Hospital

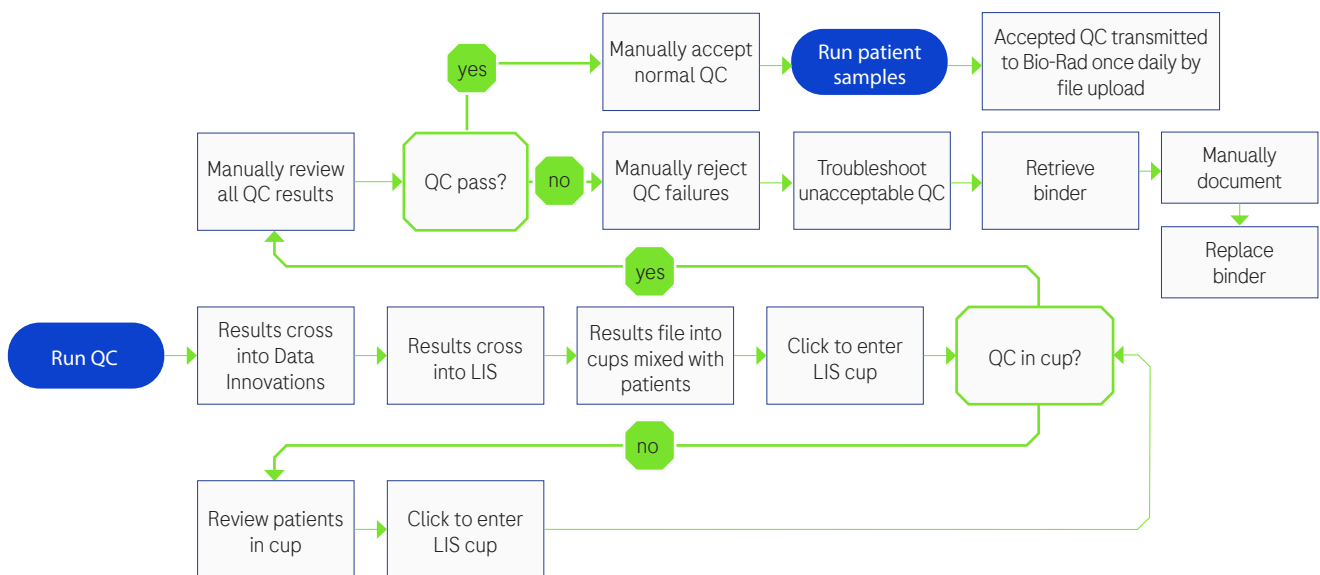
Huntsville Hospital is the main site of a 14-hospital system performing more than 13.4 million tests annually, including chemistry, hematology, coagulation and urinalysis.

### Quality Control challenges

Prior to implementing navify® Lab Operations, the lab at Huntsville had no autoverification for normal QC, which instead relied on manual sorting through cups by one scientist, who was simultaneously responsible for processing patient results. This QC process involved 14 manual steps, 2 decisions, and >1,000 clicks. Consequently, the daily QC review took 2.6 hours.



Prior to navify® Lab Operations: **14** Manual Steps, **2** Manual Decision Steps, **>1000** clicks



### Challenges caused by the manual QC process



#### Instruments

Instruments were unavailable until all QC results came back. There was no efficient way of masking certain assays for automation while troubleshooting.



#### TATs

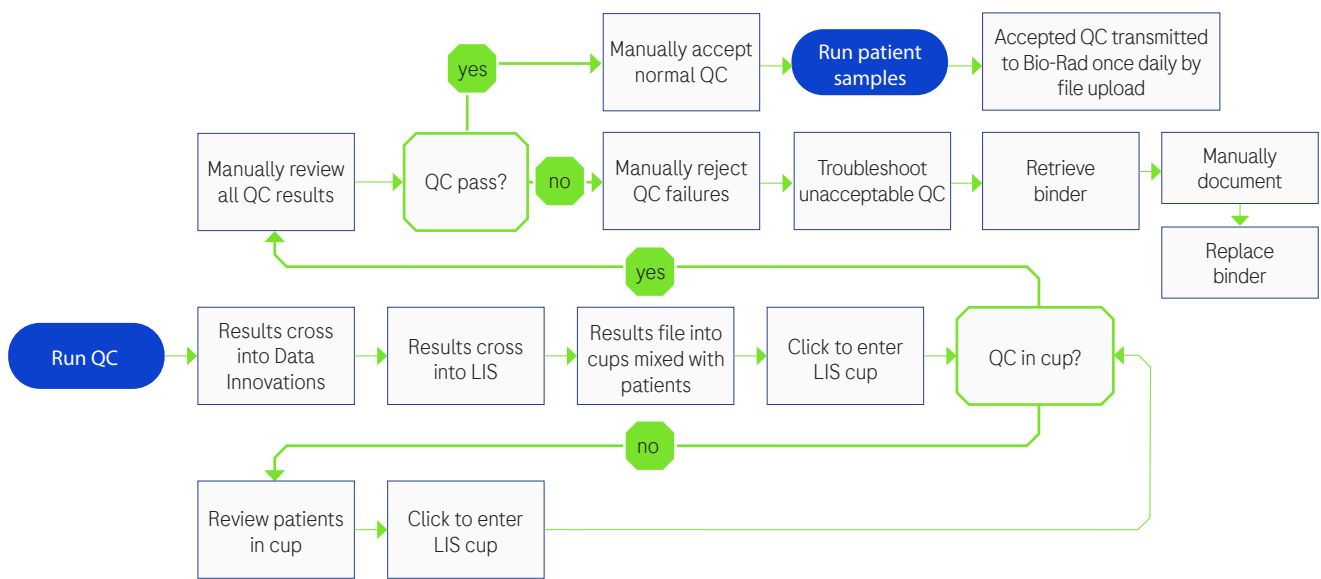
TATs were negatively impacted, as QC filing into the LIS was mixed with processing patient results, which were therefore delayed.

## Implementation of navify® Lab Operations

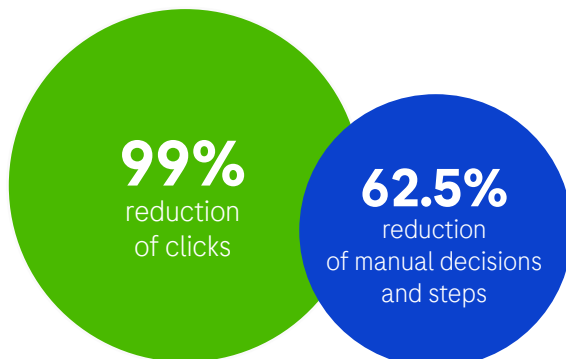
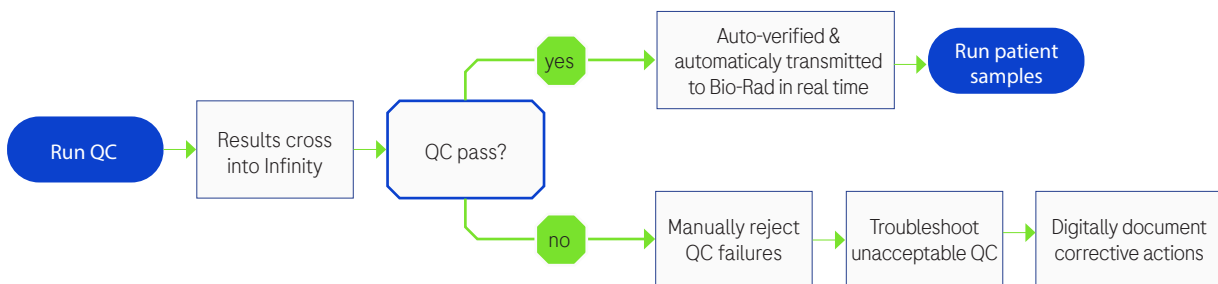
Huntsville Hospital needed a solution to simplify and transform their lab operations, in particular the QC process. Following a thorough assessment of solutions available across the industry, they decided to implement navify® Lab Operations, as it offered the most advanced end-to-end capabilities for sample management and automation, with a high degree of interoperability and data aggregation, allowing information to flow seamlessly throughout their system.

### Quality Control transformed

Prior to navify® Lab Operations: **14** Manual Steps, **2** Manual Decision Steps, **>1000** clicks

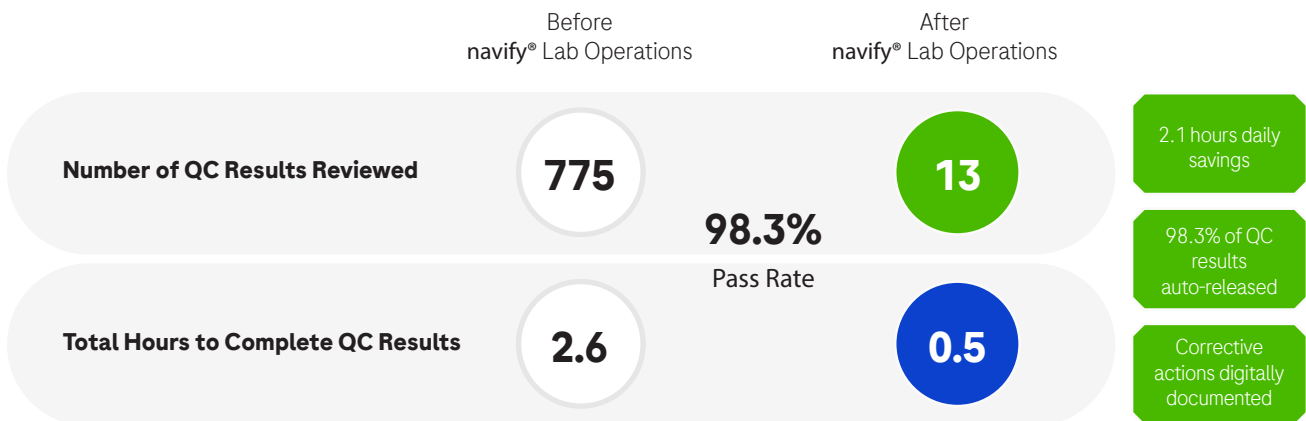


After navify® Lab Operations: **5** Process Steps, **1** Automated Decision Steps, **<10** clicks

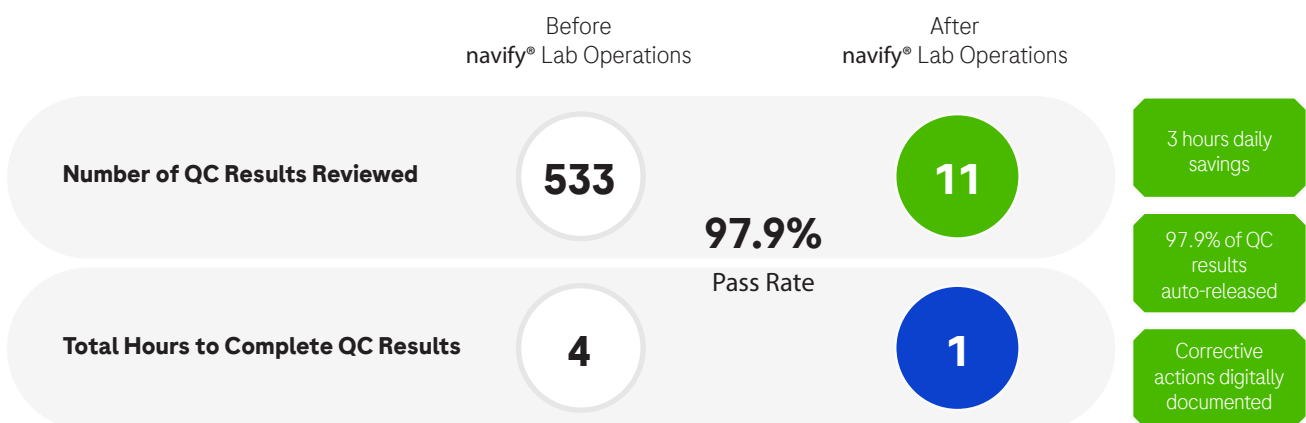


## Daily review transformed with autoverification

Before vs. after navify® Lab Operations: first shift



Before vs. after navify® Lab Operations: third shift



“Autoverification of QC has positively impacted the morale of our technical personnel and their ability to review QC outliers ONLY versus each individual result. This has significantly improved the daily workflow for instrument maintenance and QC management.”

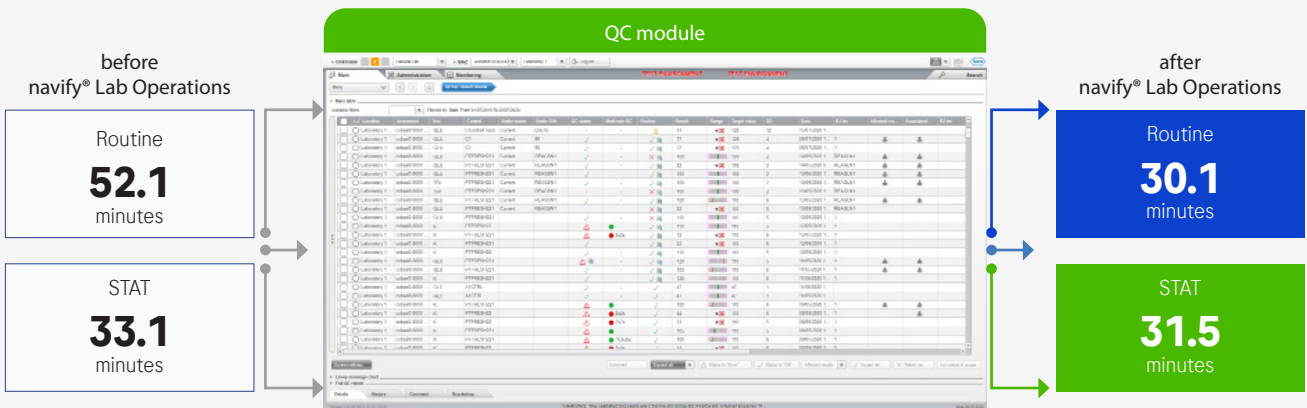
Kristin L. Fox  
Lead Chemistry Technologist, Huntsville Hospital

## Projected annual savings

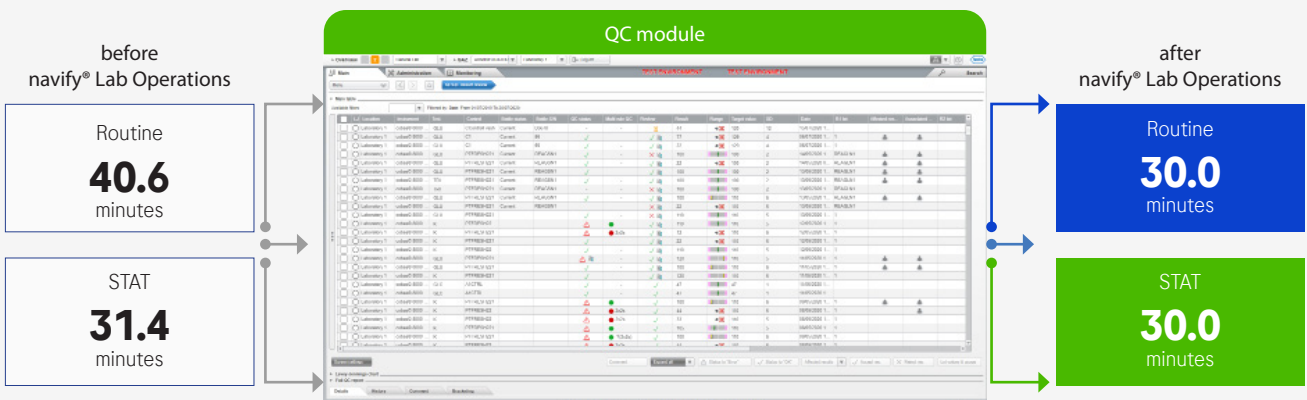


## TAT improvements

TAT improvement: first shift  
 ↓ Routine TAT by 22 mins | ↓ STAT TAT by 1.6 mins



TAT improvement: third shift  
 ↓ Routine TAT by 10.6 mins | ↓ STAT TAT by 1.4 mins



## Impact summary



“Implementation of QC review has significantly decreased our overall turnaround time for patient testing. This impact in TAT has effectively improved response to treatment for our patient population.”

Carolyn Maples  
 Automated Laboratory Manager, Huntsville Hospital

### Do more with less

With navify® Lab Operations and the QC module, you can easily automate your QC process to reduce manual, error-prone workflows, generate cost savings, and reduce TATs in your lab.

### Reduce complexity and gain control

You are in control of each and every step of your lab’s automated QC workflow. Set custom rules, error levels and warnings, and access every data point when you need it.

#### CONFIGURE

Various rules for different tests or devices for specific controls/instruments

#### CUSTOMIZE

Set warning and error levels for rule violations

#### EXAMINE

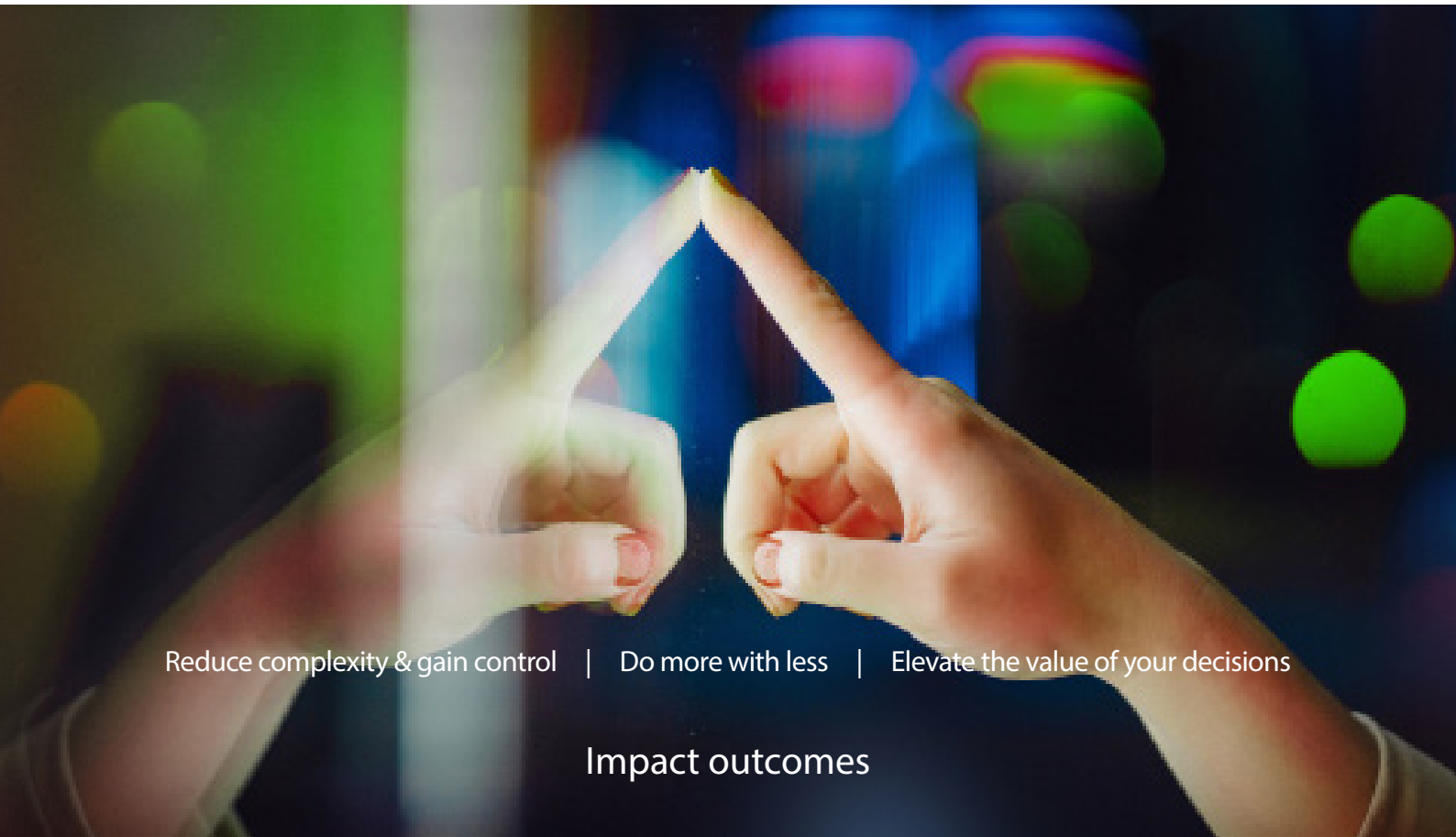
See the full details for every data point

#### COMPARE

See QC performance across analyzers and laboratories

## Elevate the value of your decisions

Seamlessly integrate QC into your auto-verification system and workflow engine. Thanks to **navify**<sup>®</sup> Lab Operations, you can trust your results and elevate your impact on patients.



Reduce complexity & gain control | Do more with less | Elevate the value of your decisions

Impact outcomes

navify<sup>®</sup> Lab Operations is the rebranded product of cobas<sup>®</sup> infinity laboratory solution. Please note that the product navify<sup>®</sup> Lab Operations is currently commercialized as cobas<sup>®</sup> infinity central lab, which is the official product name. For the purpose of this document, navify<sup>®</sup> Lab Operations will be used when referring to the cobas<sup>®</sup> infinity central lab product. It is planned that cobas<sup>®</sup> infinity lab central lab will be rebranded to navify<sup>®</sup> Lab Operations.

Individual lab results may vary, and testimonials are not claimed to represent typical results. All testimonials are real participants and may not reflect the typical purchaser's experience, and are not intended to represent or guarantee that anyone will achieve the same or similar results.



Signature Page for MC--13455 v1.0

Other Approval	Debra Robinson Trademark 15-Dec-2023 19:46:22 GMT+0000
----------------	--

Regulatory Approval	Ewald Schönhofer Regulatory Approval 19-Dec-2023 15:40:41 GMT+0000
---------------------	--

Signature Page for MC--13455 v1.0